

REVISIONS	BY
11-21-2017	
11-27-2017	
12-21-2017	
06-25-2018	



**PORT CITY**  
STUDIO  
LTD

ARCHITECTURE  
+ PLANNING

222 east main street suite 224  
port washington wisconsin  
53074

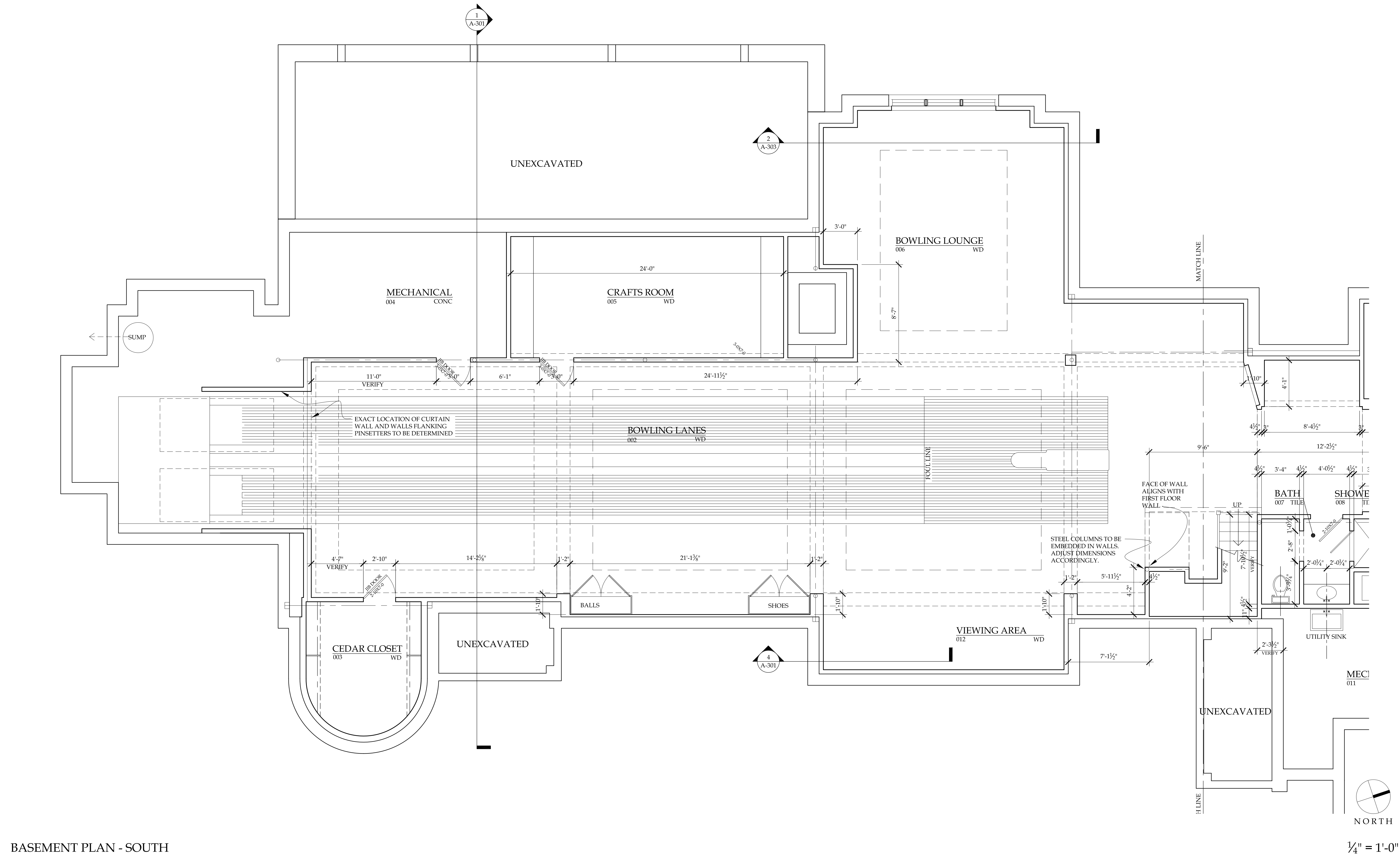
P 262.268.8248

www.portcitystudio.com

**WILPINE**  
5871 HIGHWAY 83  
HARTLAND - WISCONSIN 53029

DATE	06-02-2017
DRAWN BY	J. HANSEN
CHECKED BY	J. HANSEN
PROJECT NO.	1607

SHEET  
**A-101**



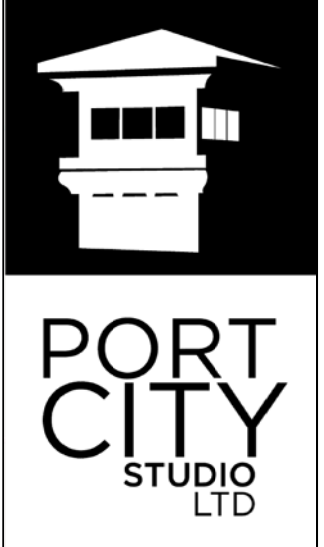
BASEMENT PLAN - SOUTH

1/4" = 1'-0"





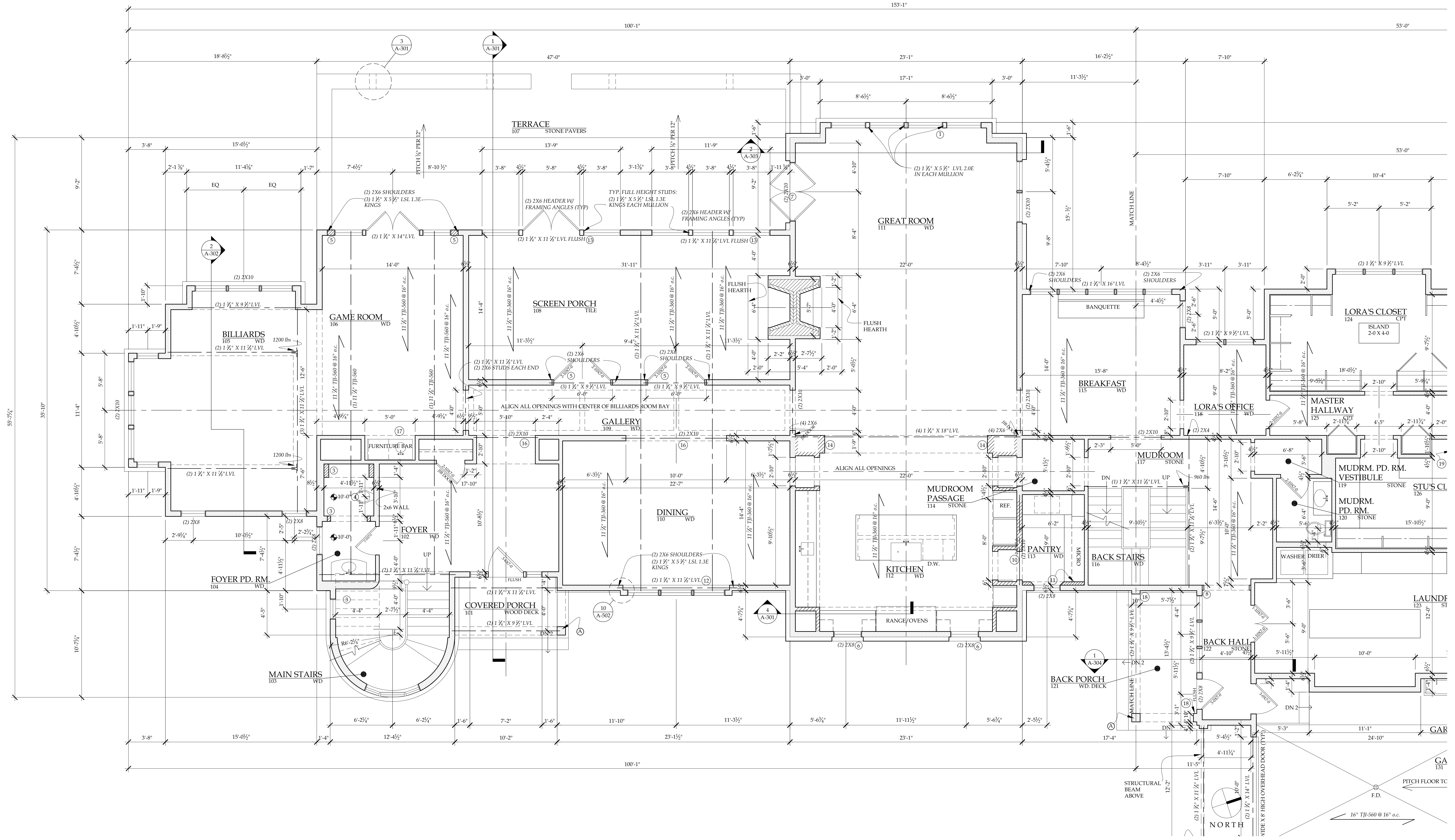
REVISIONS	BY
06-20-2017	JH
11-21-2017	
11-27-2017	



ARCHITECTURE + PLANNING

222 east main street suite 224  
port washington wisconsin  
53074  
P 262.268.8248  
www.portcitystudio.com

WILPINE  
5871 HIGHWAY 83  
HARTLAND - WISCONSIN 53029



FIRST FLOOR PLAN - SOUTH

1/4" = 1'-0"

FIRST FLOOR STRUCTURAL NOTES

- (A) TYP. BEAM TO POST CONNECTION: TOP: (2) H2.5ATIES, BASE: POST-BASE ABU66Z (NAILED)

FIRST FLOOR PLAN NOTES

- (1) PROVIDE FULL EXTENSION JAMBS AT ALL WINDOWS IN GREAT ROOM BAY
- (2) THROUGH WALL SCUPPERS; SEE DETAIL
- (3) INFILL FRAMING TO BE DETERMINED. INSTALL BASIC WALLS ONLY (DOTTED HATCH)
- (4) COVE CEILING TO BE FRAMED LATER BELOW 10'-0" FLAT CEILING FRAMING
- (5) DOOR SIZE T.B.D. - FRAME OPENING AS SHOWN WITH DOTTED WALLS. HEADER TO BE TIGHT TO TOP WALL PLATE.
- (6) FRAME WINDOW R.O. 6" WIDER THAN WINDOW SCHEDULE INDICATES (3" ON EACH SIDE OF WINDOW.)
- (7) INSTALL HEADER AT 10'-0" A.F.F.
- (8) ORNAMENTAL JAMBS BY MILLWORKER
- (9) BUILT-IN IRONING BOARD: THICKNESS OF FURRED WALL TO BE DETERMINED. FRAME TOP OF R.O. AT 8'-0" A.F.F.
- (10) EXACT POCKET DOOR LOCATION TO BE DETERMINED. FRAME OPENING ACCORDING TO SHOWN DIMENSIONS (DOTTED WALLS)
- (11) EXTERIOR WALL FURRING THICKNESS TO BE DETERMINED. FRAME TYPICAL EXTERIOR 2X6 WALL ONLY.
- (12) INSTALL HEADER TIGHT TO UNDERSIDE OF TOP WALL PLATE. SEE ELEVATION.
- (13) HEADERS AT SCREENED PORCH ARE INSTALLED FLUSH (SEE SECTION) LEAVE BOTH SCREEN SECTIONS OPEN. FULL HEIGHT STUDS AND 2X6 HEADERS TO BE INSTALLED WITH FINAL SCREEN SYSTEM.
- (14) WALL LOCATION TO BE DETERMINED. FRAME ONLY DOTTED WALLS. CROSS-HATCHED WALLS TO BE INSTALLED LATER.
- (15) WALL RADIUS WILL BE PROVIDED WHEN TUB SELECTION IS VERIFIED
- (16) OPENING HEIGHT TO BE DETERMINED. INSTALL HEADER TIGHT TO TOP WALL PLATE
- (17) NICHE CEILING HEIGHT TO BE DETERMINED. FRAME OPENING TO FULL CEILING HEIGHT.
- (18) NON-STRUCTURAL MILLWORK PILASTER. LVL ABOVE TO BEAR ON STUD COLUMN IN EXTERIOR WALL.
- (19) NO GYPSUM WALL BOARD ON CLOSET SIDE.

A-103



REVISIONS	BY
07-13-2017	JH
11-21-2017	
11-27-2017	



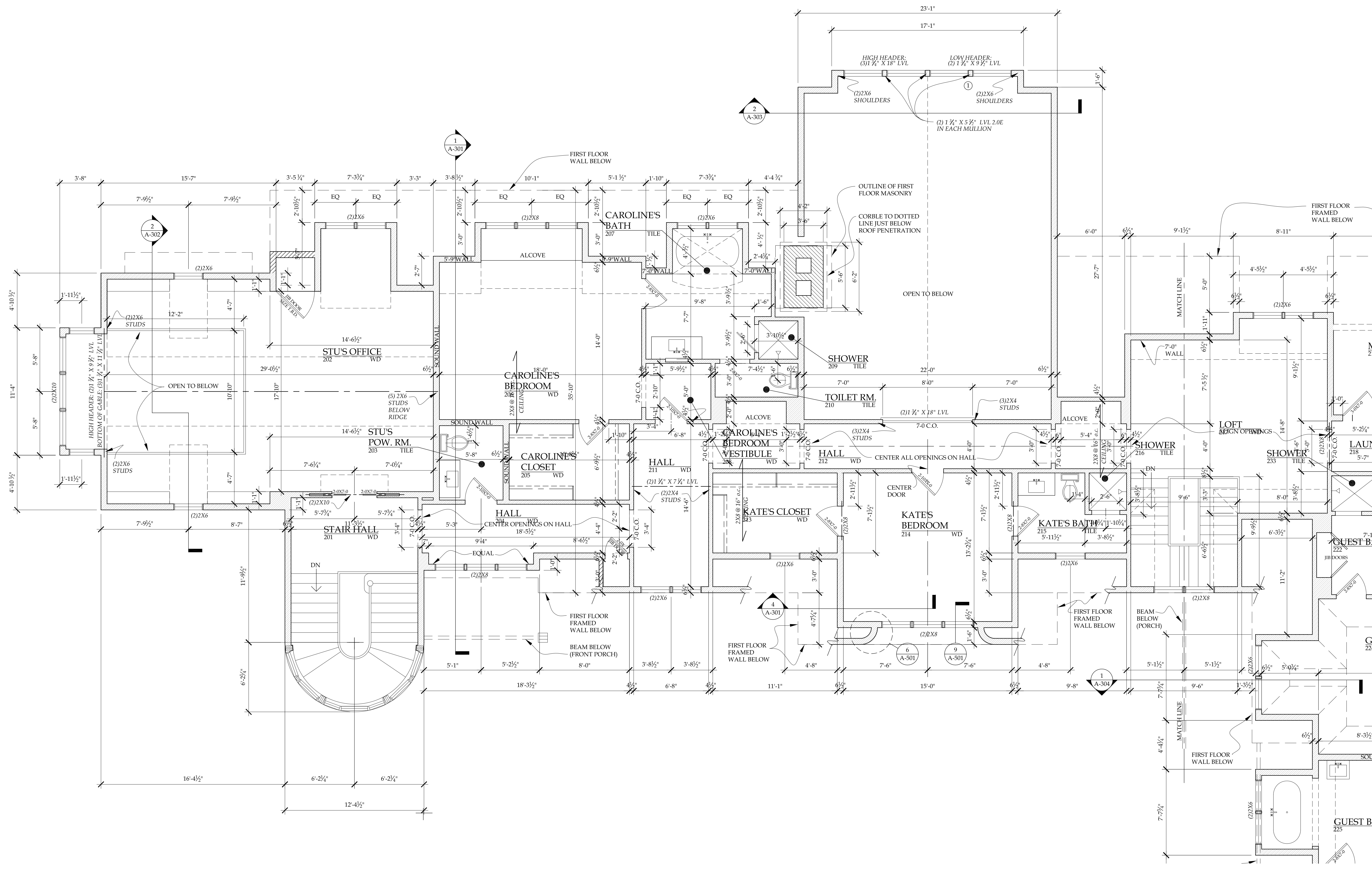
ARCHITECTURE  
+ PLANNING

222 east main street suite 224  
port washington wisconsin  
53074

P 262.268.8248

www.portcitystudio.com

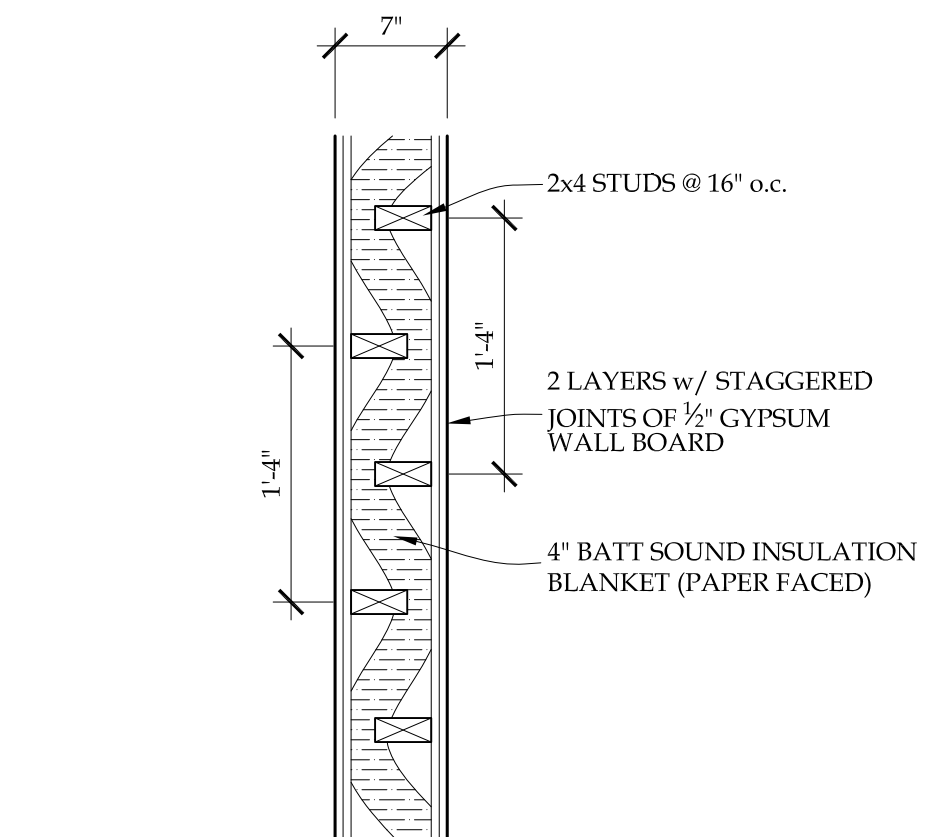
WILPINE  
5871 HIGHWAY 83  
HARTLAND - WISCONSIN 53029



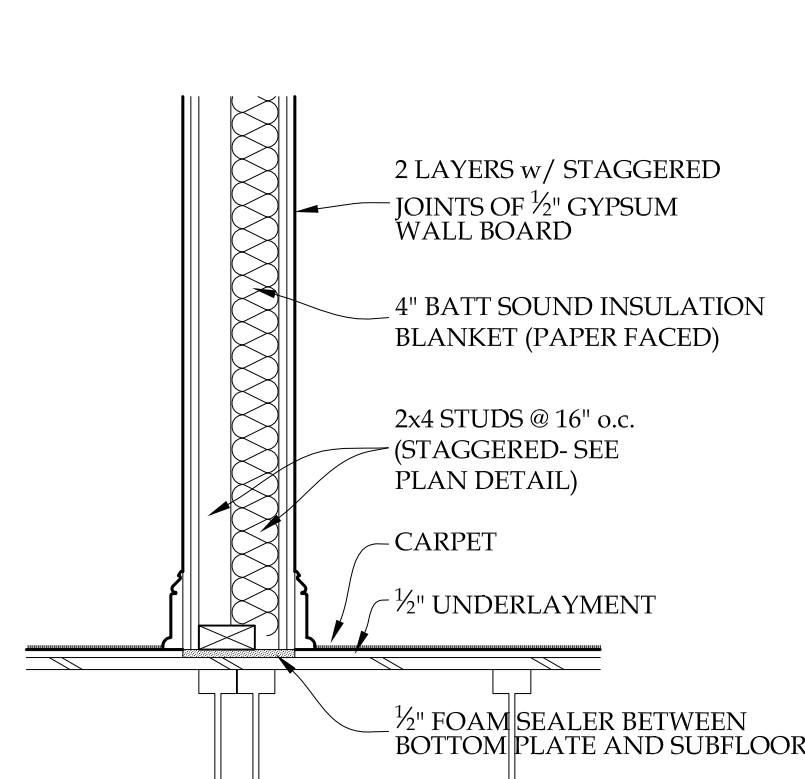
NORTH

1/4" = 1'-0"

SECOND FLOOR PLAN - SOUTH



SECOND FLOOR SOUND WALL DETAILS



1" = 1'-0"

TYPICAL DOOR LOCATION AT WALL

1 1/2" = 1'-0"

SECOND FLOOR PLAN GENERAL NOTES

UNLESS NOTED OTHERWISE INTERIOR DOORS ADJACENT TO A PERPENDICULAR WALL SHOULD BE LOCATED SO THE CLOSEST FINISHED OPENING EDGE IS 6" FROM THE FINISHED WALL. SEE DETAIL THIS SHEET.

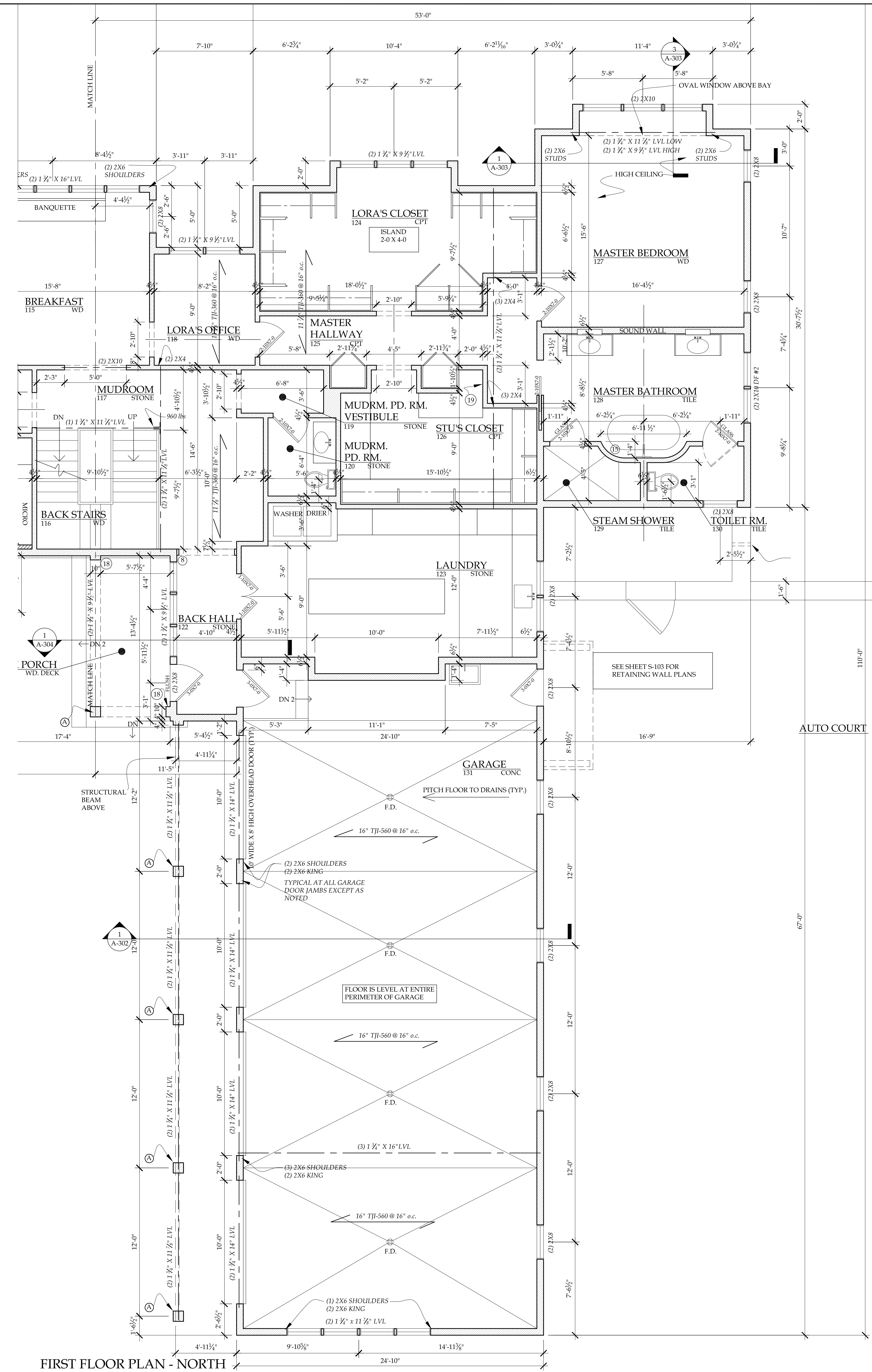
SECOND FLOOR PLAN KEYED NOTES

- 1 PROVIDE FULL EXTENSION JAMBS AT ALL WINDOWS IN BAY
- 2 OPENING DEPTH AND HEIGHT TO BE DETERMINED. INSTALL WALL SHOWN DOTTED ONLY. LET OPENINGS GO TO UNDERSIDE OF RAFTERS.
- 3 LOCATION OF INSULATED 2X6 FRAMED WALLS AROUND MECHANICAL ROOM TO BE DETERMINED BY CONTRACTOR
- 4 WING WALLS AND DROPPED HEADER TO BE DETERMINED. FRAME ONLY BASIC WALLS WITH NO HEADER. INSTALL HEADER FOR RAFTERS HIGH. SEE SECTION 1/A-302.
- 5 FRAME AS FULL 8'-0" WIDE OPENING (NO WING WALLS). EXACT DOOR CONFIGURATION TO BE DETERMINED.

DATE	06-02-2017
DRAWN BY	J. HANSEN
CHECKED BY	J. HANSEN
PROJECT NO.	1607
SHEET	

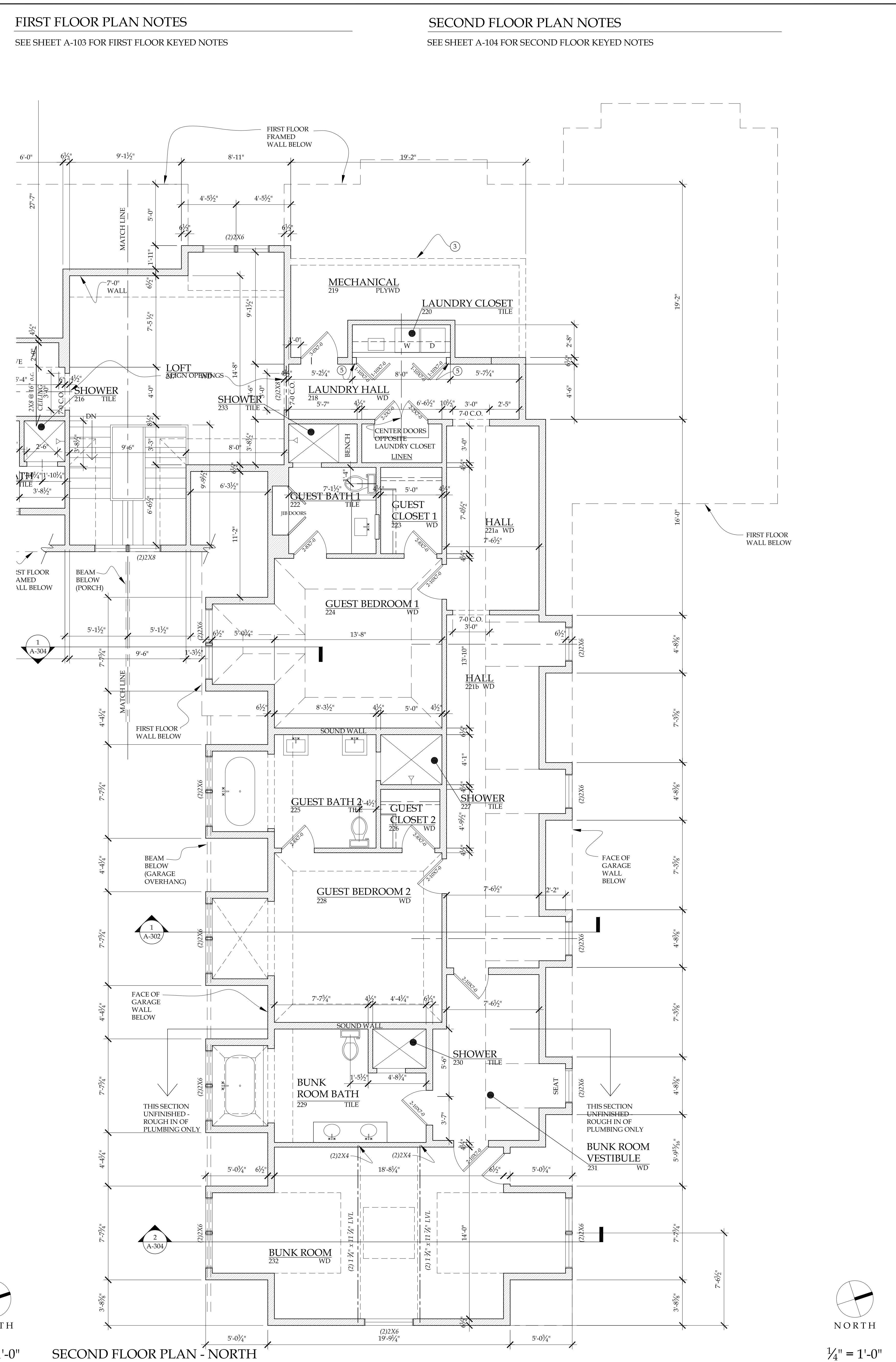
A-104





FIRST FLOOR PLAN - NORTH

1/4" = 1'-0"



SECOND FLOOR PLAN - NORTH

1/4" = 1'-0"

FIRST FLOOR PLAN NOTES  
SEE SHEET A-103 FOR FIRST FLOOR KEYED NOTES

SECOND FLOOR PLAN NOTES  
SEE SHEET A-104 FOR SECOND FLOOR KEYED NOTES

REVISIONS	BY
07-13-2017	JH
11-21-2017	
11-27-2017	
12-07-2017	
06-29-2018	

**PORT CITY STUDIO LTD.**  
ARCHITECTURE + PLANNING

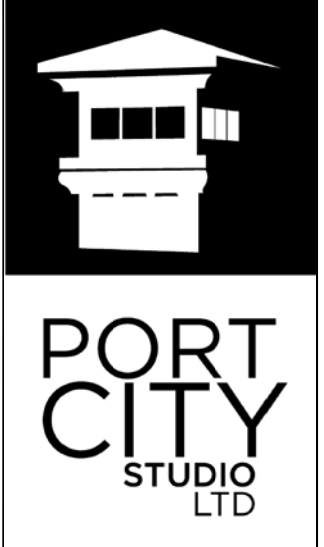
222 east main street suite 224  
port washington wisconsin  
53074  
P 262.268.8248  
www.portcitystudio.com

**WILPINE**  
5871 HIGHWAY 83  
HARTLAND - WISCONSIN 53029

DATE	06-02-2017
DRAWN BY	J. HANSEN
CHECKED BY	J. HANSEN
PROJECT NO.	1607
SHEET	A-105



REVISIONS	BY
07-26-2017	
11-06-2017	



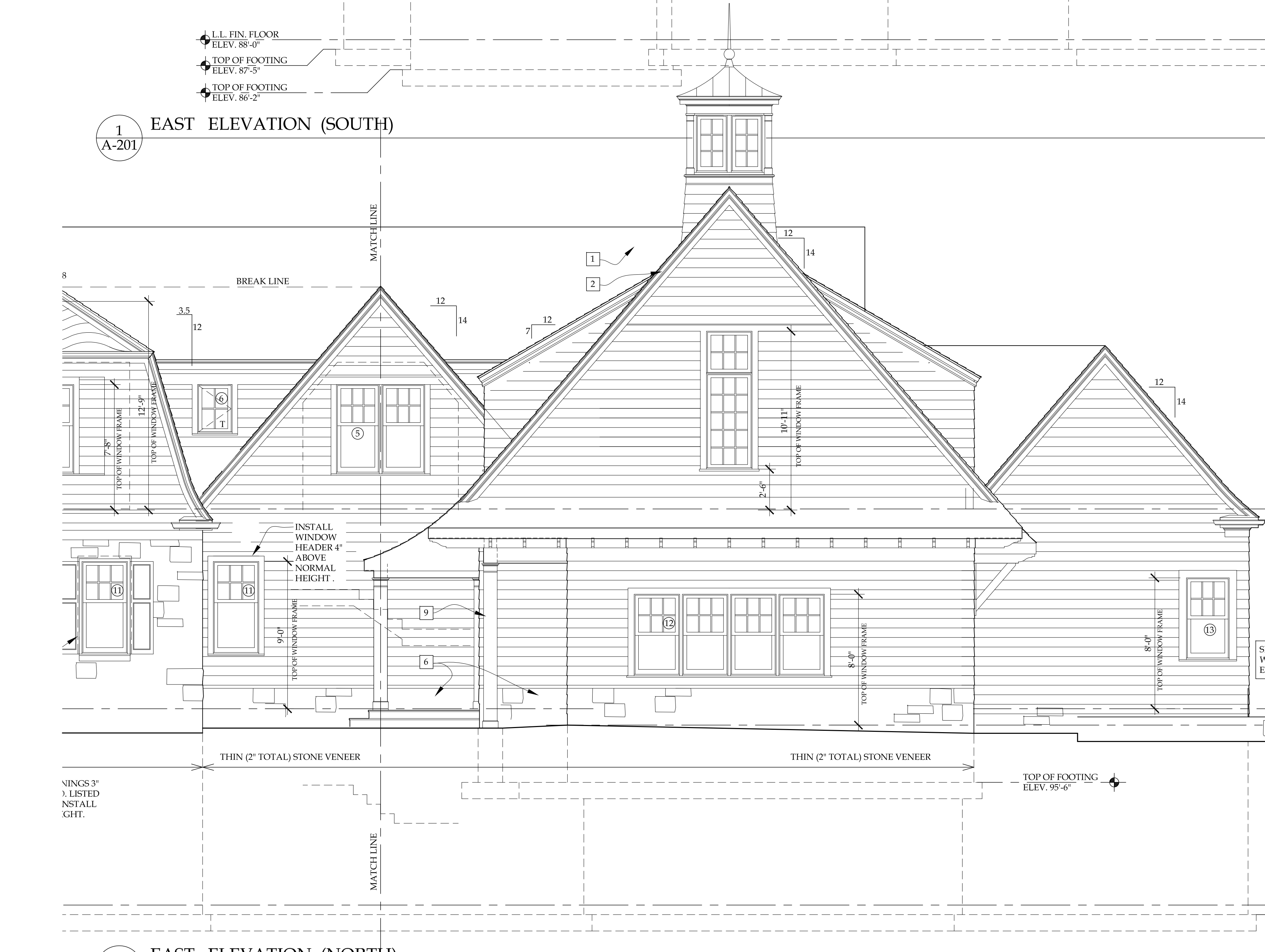
ARCHITECTURE + PLANNING

222 east main street suite 224  
port washington wisconsin  
53074  
P 262.268.8248  
www.portcitystudio.com



1 EAST ELEVATION (SOUTH)  
A-201

1/4" = 1'-0"



2 EAST ELEVATION (NORTH)  
A-201

1/4" = 1'-0"

EXTERIOR MATERIALS KEY

- 1 SAWN CEDAR SHINGLES
- 2 SMOOTH CEDAR TRIM, PAINTED
- 3 SAWN CEDAR WALL SHINGLES, STAINED
- 4 WOOD DOUBLE HUNG WINDOW, PAINTED
- 5 COPPER GUTTERS AND DOWN SPOUTS
- 6 FACE STONE
- 7 SOLID SMOOTH CEDAR BRACKET, PAINTED
- 8 OVERHEAD DOOR, PAINTED
- 9 SMOOTH WOOD COLUMN, PAINTED
- 10 COPPER ROOF AND FINIAL
- 11 SMOOTH CEDAR WINDOW TRIM, PAINTED

KEYED ELEVATION NOTES

- A CUSTOM MILLWORK DOOR
- B CUSTOM MILLWORK SCREEN SYSTEM
- C CUSTOM MILLWORK WINDOW. FRAME RECTANGULAR R.O. SHOWN ON ELEVATION IN DOTTED LINE.
- D THIN STONE VENEER ON HOUSE WALL BEYOND EQUIPMENT BAY. SEE S-103 AND FOR DETAILS.
- E EXACT SIZE AN CONFIGURATION OF DINING ROOM BAY TO BE DETERMINED.
- F INSTALL HEADER TIGHT TO UNDERSIDE OF TOP WALL PLATE

WILPINE  
5871 HIGHWAY 83  
HARTLAND - WISCONSIN 53029

DATE	06-02-2017
DRAWN BY	J. HANSEN
CHECKED BY	J. HANSEN
PROJECT NO.	1607
SHEET	

A-201

REVISIONS	BY
06-20-2017	JH
07-26-2017	JH
11-06-2017	JH



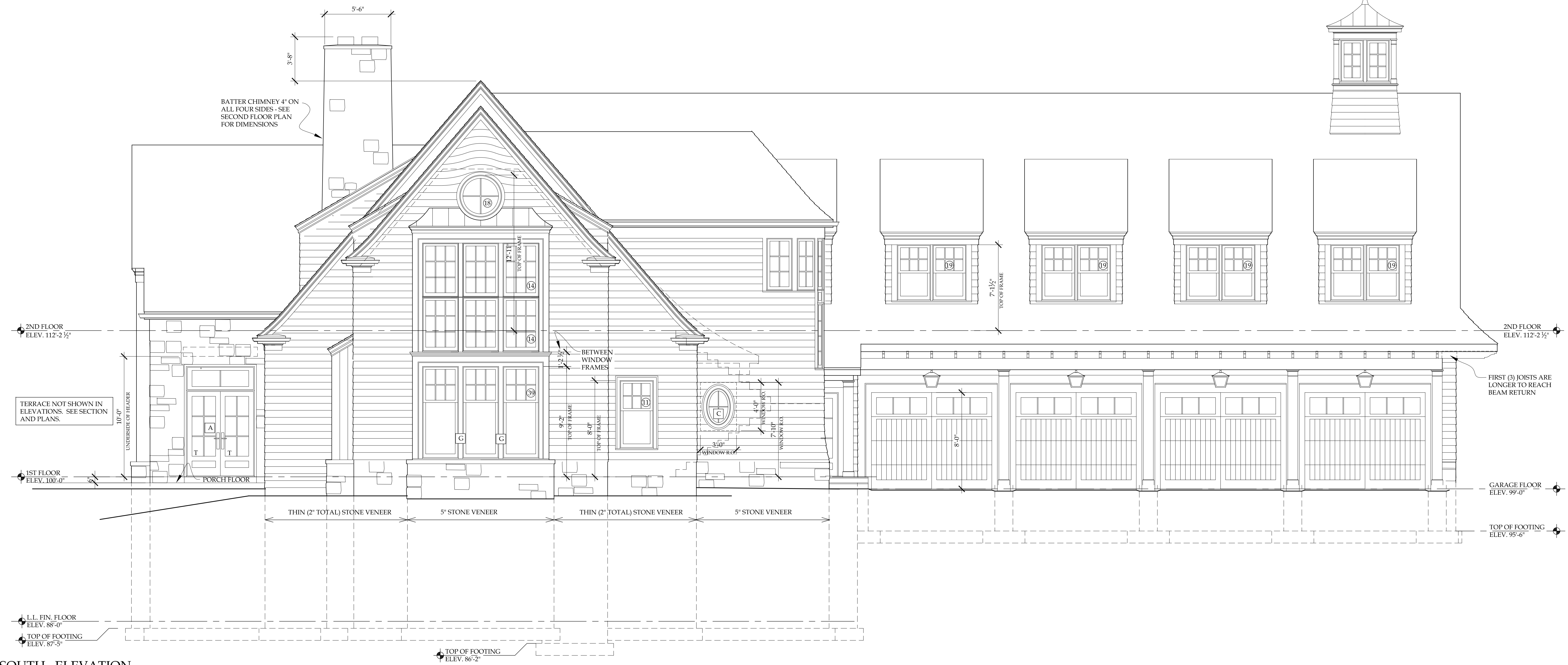
**PORT CITY**  
STUDIO  
LTD

ARCHITECTURE  
+ PLANNING

222 east main street suite 224  
port washington wisconsin  
53074  
P 262.268.8248

www.portcitystudio.com

**WILPINE**  
5871 HIGHWAY 83  
HARTLAND - WISCONSIN 53029



1 SOUTH ELEVATION  
A-202

1/4" = 1'-0"



2 PARTIAL SOUTH ELEVATION @ REAR PORCH  
A-202

1/4" = 1'-0"

**EXTERIOR MATERIALS KEY**

- 1 SAWN CEDAR SHINGLES
- 2 SMOOTH CEDAR TRIM, PAINTED
- 3 SAWN CEDAR WALL SHINGLES, STAINED
- 4 WOOD DOUBLE HUNG WINDOW, PAINTED
- 5 COPPER GUTTERS AND DOWN SPOUTS
- 6 FACE STONE
- 7 SOLID SMOOTH CEDAR BRACKET, PAINTED
- 8 OVERHEAD DOOR, PAINTED
- 9 SMOOTH WOOD COLUMN, PAINTED
- 10 COPPER ROOF AND FINIAL
- 11 SMOOTH CEDAR WINDOW TRIM, PAINTED

**KEYED ELEVATION NOTES**

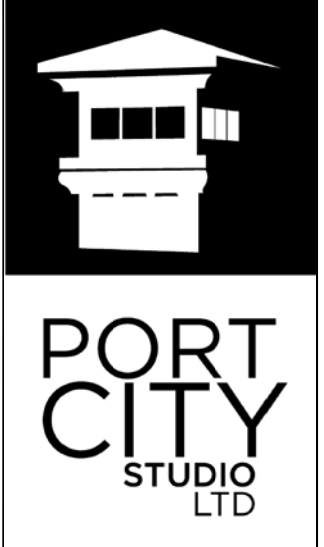
- A CUSTOM MILLWORK DOOR
- B CUSTOM MILLWORK SCREEN SYSTEM
- C CUSTOM MILLWORK WINDOW. FRAME RECTANGULAR R.O. SHOWN ON ELEVATION IN DOTTED LINE.
- D THIN STONE VENEER ON HOUSE WALL BEYOND EQUIPMENT BAY. SEE S-103 AND FOR DETAILS.
- E EXACT SIZE AND CONFIGURATION OF DINING ROOM BAY TO BE DETERMINED.
- F INSTALL HEADER TIGHT TO UNDERSIDE OF TOP WALL PLATE
- G 4 1/2" VERTICAL SPACE MULLS AT THIS BAY ONLY

DATE	06-02-2017
DRAWN BY	J. HANSEN
CHECKED BY	J. HANSEN
PROJECT NO.	1607
SHEET	

**A-202**



REVISIONS	BY
07-26-2017	JH



ARCHITECTURE  
+ PLANNING

222 east main street suite 224  
port washington wisconsin  
53074  
P 262.268.8248  
www.portcitystudio.com

**WILPINE**  
5871 HIGHWAY 83  
HARTLAND - WISCONSIN 53029

DATE	06-02-2017
DRAWN BY	J. HANSEN
CHECKED BY	J. HANSEN
PROJECT NO.	1607
SHEET	

**A-203**

**EXTERIOR MATERIALS KEY**

- 1 SAWN CEDAR SHINGLES
- 2 SMOOTH CEDAR TRIM, PAINTED
- 3 SAWN CEDAR WALL SHINGLES, STAINED
- 4 WOOD DOUBLE HUNG WINDOW, PAINTED
- 5 COPPER GUTTERS AND DOWN SPOUTS
- 6 FACE STONE
- 7 SOLID SMOOTH CEDAR BRACKET, PAINTED
- 8 OVERHEAD DOOR, PAINTED
- 9 SMOOTH WOOD COLUMN, PAINTED
- 10 COPPER ROOF AND FINIAL
- 11 SMOOTH CEDAR WINDOW TRIM, PAINTED

**KEYED ELEVATION NOTES**

- A CUSTOM MILLWORK DOOR.
- B CUSTOM MILLWORK SCREEN SYSTEM
- C CUSTOM MILLWORK WINDOW, FRAME RECTANGULAR R.O. SHOWN ON ELEVATION IN DOTTED LINE.
- D THIN STONE VENEER ON HOUSE WALL BEYOND EQUIPMENT BAY. SEE S-103 AND FOR DETAILS.
- E EXACT SIZE AN CONFIGURATION OF DINING ROOM BAY TO BE DETERMINED.
- F INSTALL HEADER TIGHT TO UNDERSIDE OF TOP WALL PLATE



1 WEST ELEVATION (NORTH)  
A-203

1/4" = 1'-0"



2 WEST ELEVATION (SOUTH)  
A-203

1/4" = 1'-0"



REVISIONS	BY
07-26-2017	JH
11-06-2017	JH



**PORT CITY**  
STUDIO  
LTD

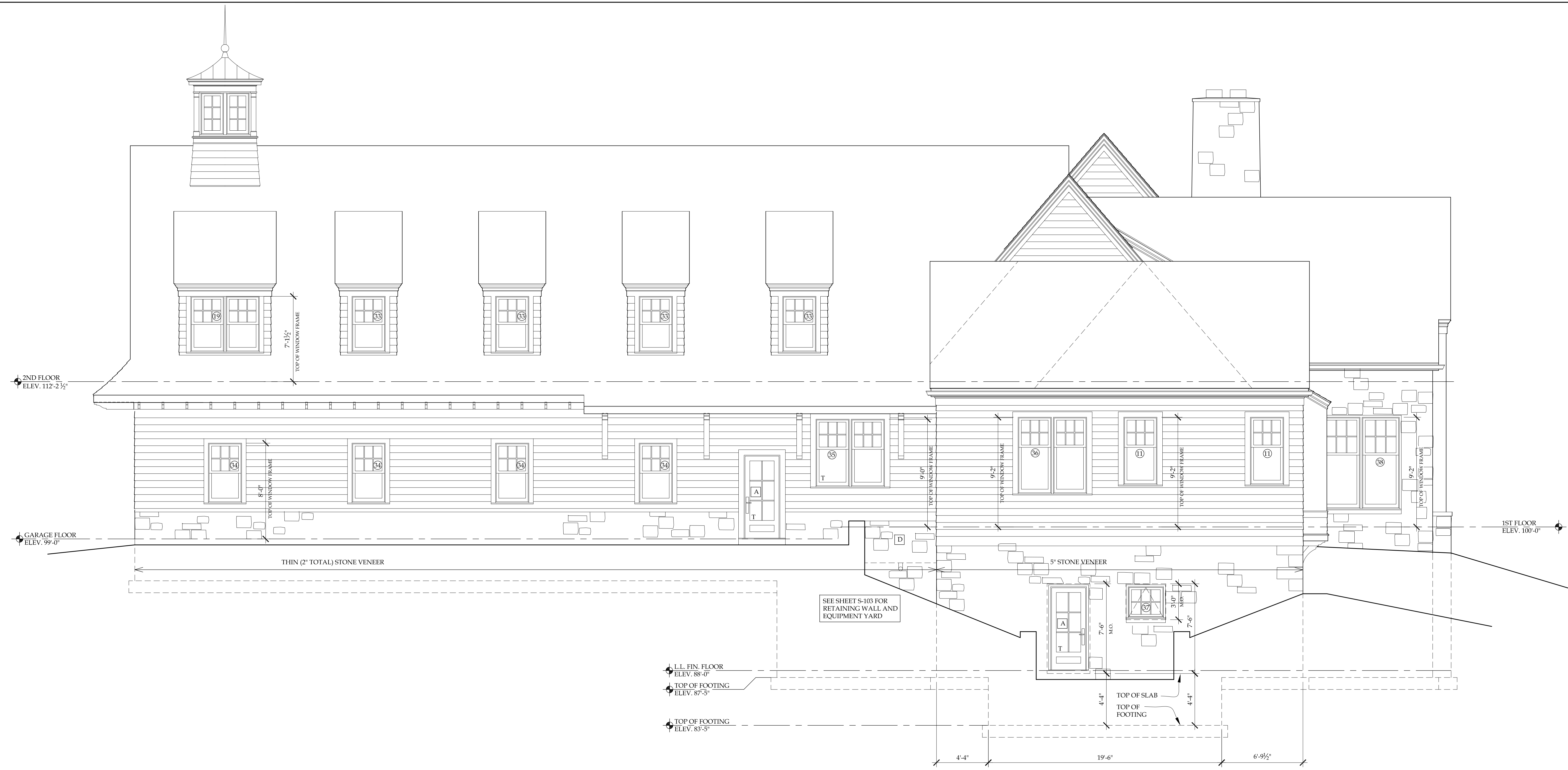
ARCHITECTURE  
+ PLANNING

222 east main street suite 224  
port washington wisconsin  
53074

P 262.268.8248

www.portcitystudio.com

**WILPINE**  
5871 HIGHWAY 83  
HARTLAND - WISCONSIN 53029



1 NORTH ELEVATION  
A-204

1/4" = 1'-0"

**EXTERIOR MATERIALS KEY**

- 1 SAWN CEDAR SHINGLES
- 2 SMOOTH CEDAR TRIM, PAINTED
- 3 SAWN CEDAR WALL SHINGLES, STAINED
- 4 WOOD DOUBLE HUNG WINDOW, PAINTED
- 5 COPPER GUTTERS AND DOWN SPOUTS
- 6 FACE STONE
- 7 SOLID SMOOTH CEDAR BRACKET, PAINTED
- 8 OVERHEAD DOOR, PAINTED
- 9 SMOOTH WOOD COLUMN, PAINTED
- 10 COPPER ROOF AND FINIAL
- 11 SMOOTH CEDAR WINDOW TRIM, PAINTED

**KEYED ELEVATION NOTES**

- A CUSTOM MILLWORK DOOR
- B CUSTOM MILLWORK SCREEN SYSTEM
- C CUSTOM MILLWORK WINDOW. FRAME RECTANGULAR R.O. SHOWN ON ELEVATION IN DOTTED LINE.
- D THIN STONE VENEER ON HOUSE WALL BEYOND EQUIPMENT BAY. SEE S-103 AND FOR DETAILS.
- E EXACT SIZE AN CONFIGURATION OF DINING ROOM BAY TO BE DETERMINED.
- F INSTALL HEADER TIGHT TO UNDERSIDE OF TOP WALL PLATE

DATE 06-02-2017

DRAWN BY J. HANSEN

CHECKED BY J. HANSEN

PROJECT NO. 1607

SHEET

**A-204**